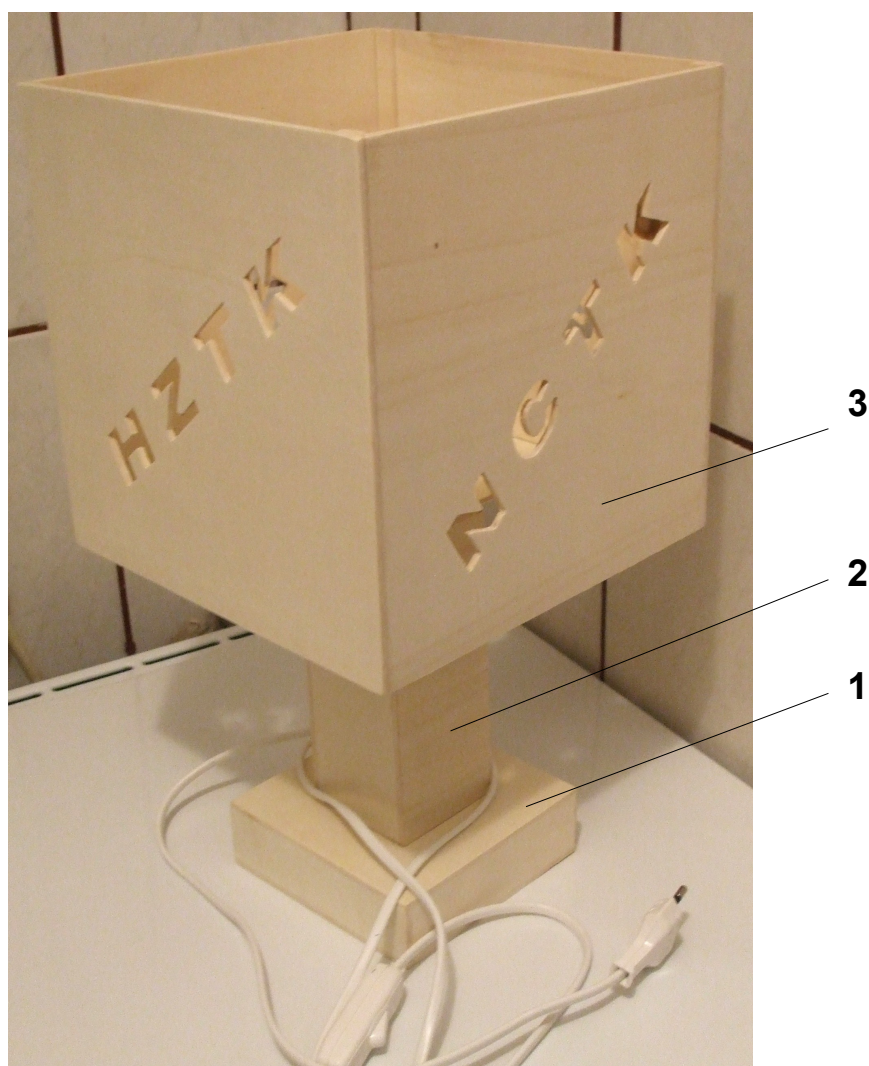


## Stolna svjetiljka – noćna rasvjeta



### Dijelovi svjetiljke:

1. Dolnji nosač stupa.
2. Stup svjetiljke.
3. Sjenilo za svjetiljku.

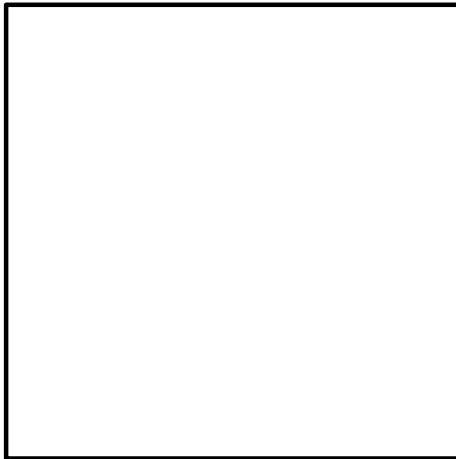
**Nosač stupa svjetiljke I dio**

**Nosač stupa svjetiljke I dio**

**Nosač stupa svjetiljke II dio**

**Nosač stupa svjetiljke II dio**

**Dno II dio**

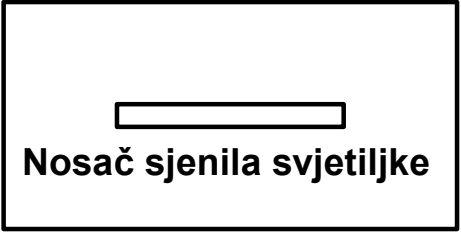
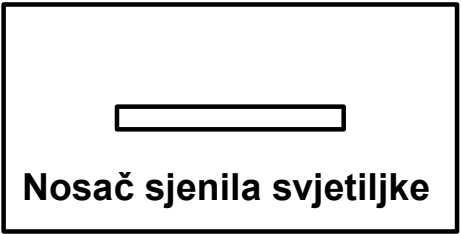
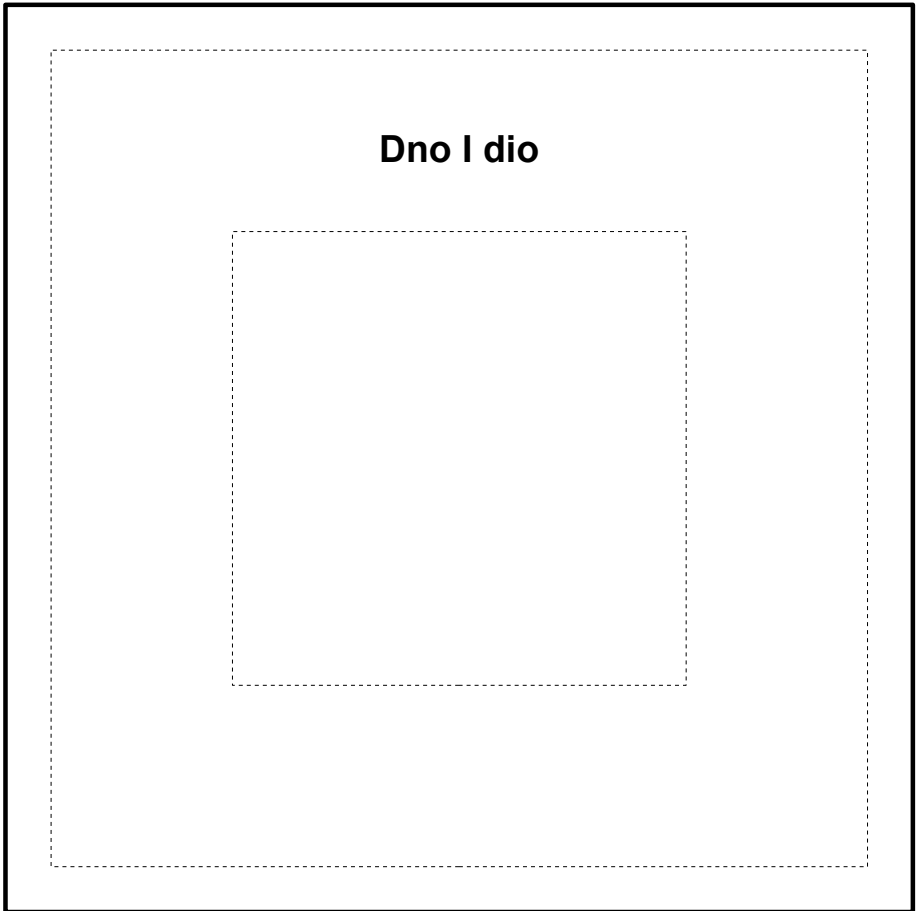
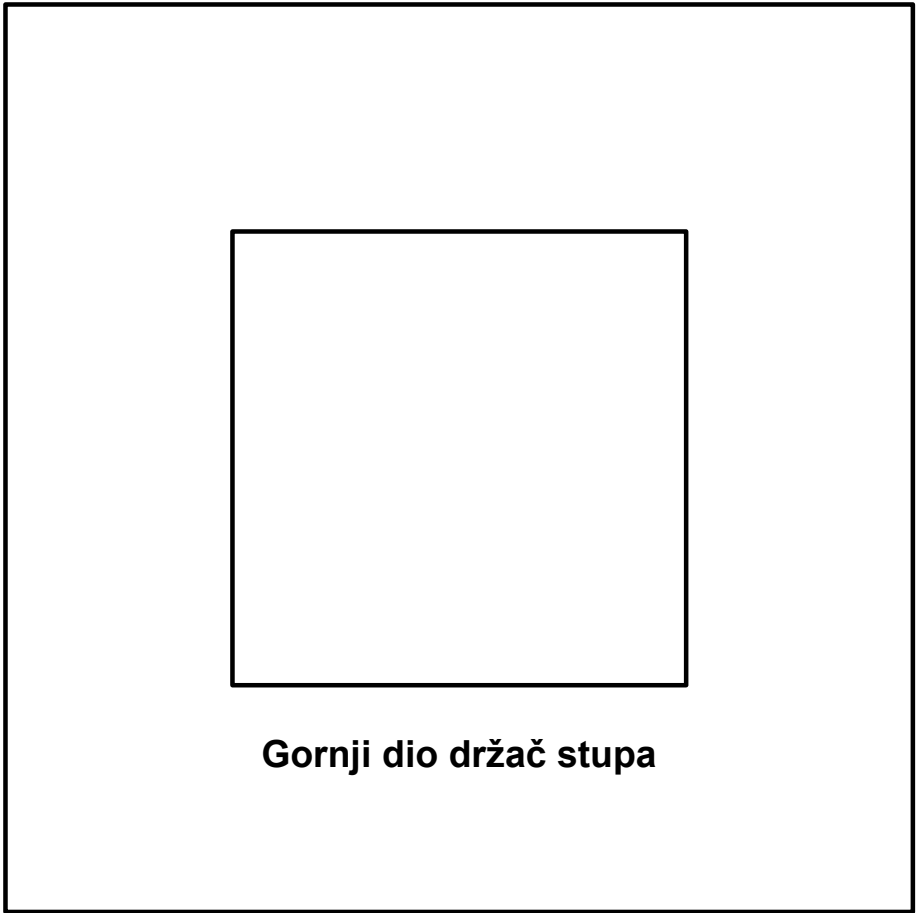


**Nosač stupa svjetiljke kraći I dio**

**Nosač stupa svjetiljke kraći I dio**

**Nosač stupa svjetiljke kraći II dio**

**Nosač stupa svjetiljke kraći II dio**



**Stup I dio**

**Stup I dio**

**Stup II dio**

**Stup II dio**

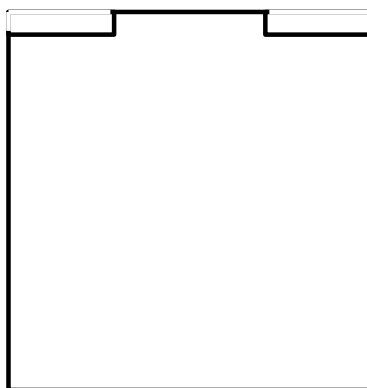
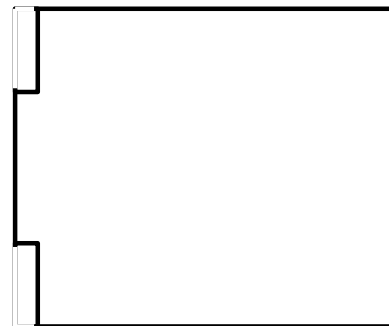
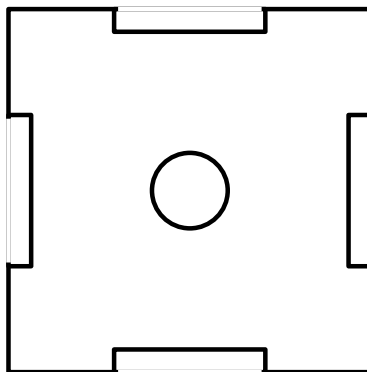
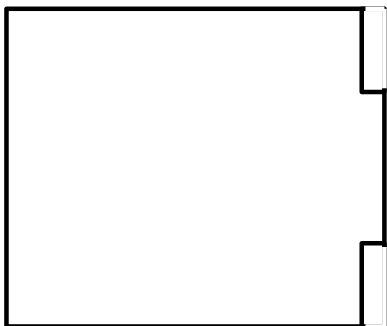
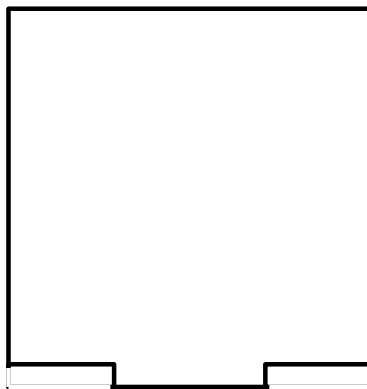
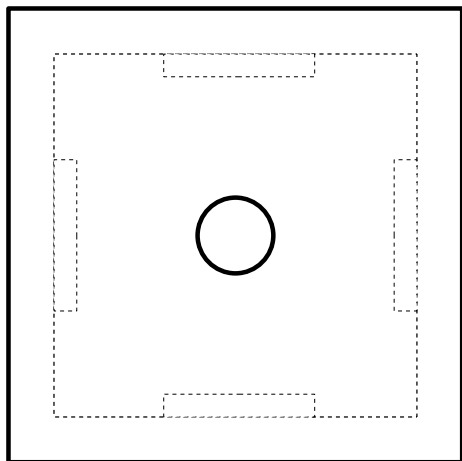
**Stup uža strana I dio**

**Stup uža strana I dio**

**Stup uža strana II dio**

**Stup uža strana II dio**

# Dijelovi poklopca stupa svjetiljke



Dijelovi sjenila za stolnu svjetiljku M1:2.

1. Crtati 2 komada

2. Crtati 2 komada

3. Crtati 4 komada

