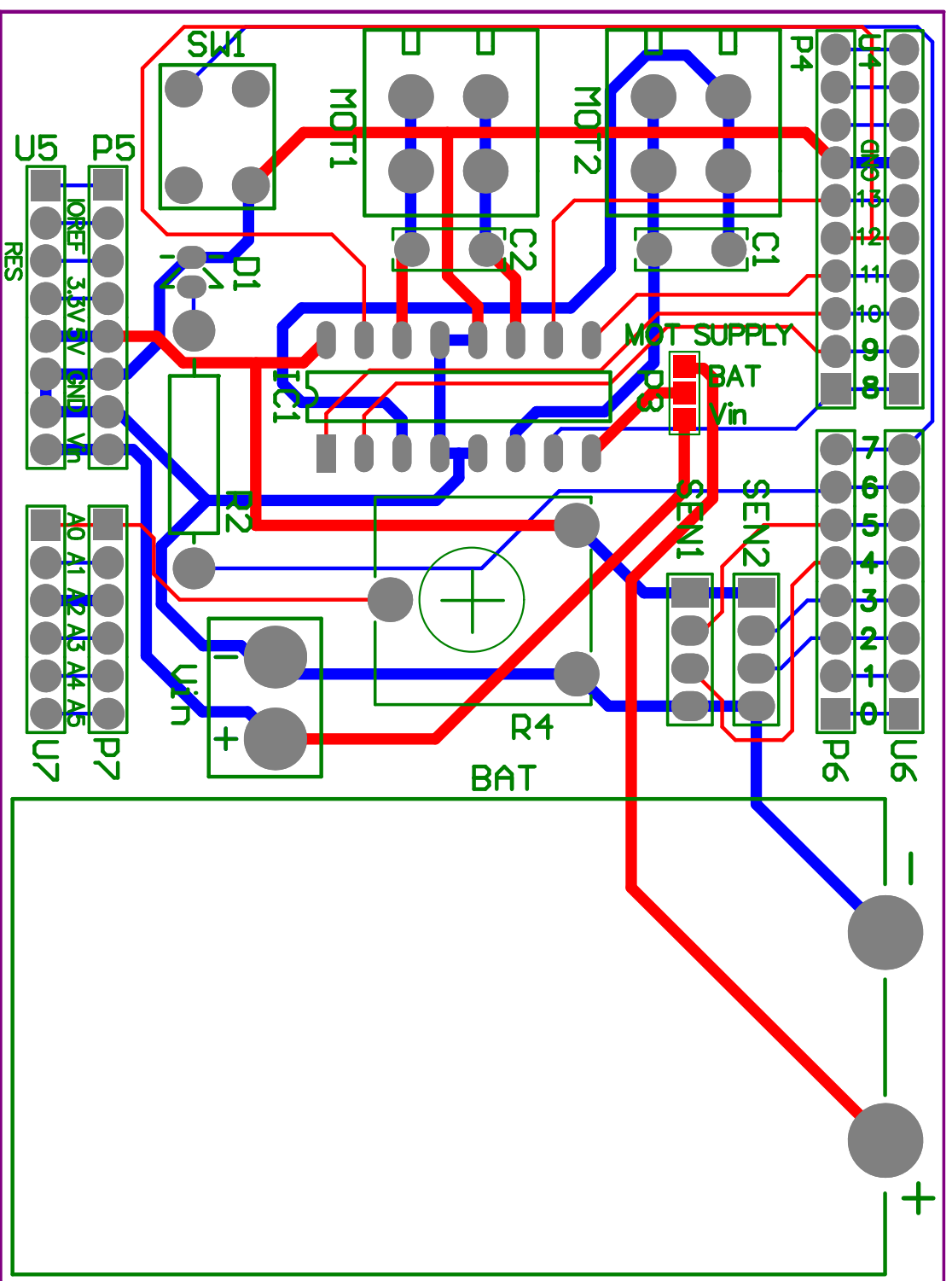


| | | |
|-------|---------------------------------------|-----------|
| Title | | |
| Size | Number | Revision |
| A4 | | |
| Date: | 10.6.2016. | Sheet of |
| File: | D:\9.1 Projekt 2016\..UNO Ext PCB.Sch | Drawn By: |



| Comment | Description | Designator | Footprint | LibRef | Quantity |
|------------|----------------|----------------|-------------------|-----------|----------|
| L293 | | | DIP16-djeca | L293 | 1 |
| Cap | Capacitor | C1, C2 | COND za djecu | Cap | 2 |
| LED | | D1 | LED 5MM | LED | 1 |
| 2xAA | Header, 2-Pin | P1 | BAT HOLDER 2xAA | Header 2 | 1 |
| 9V | Header, 2-Pin | P2 | 2Pin SK | Header 2 | 1 |
| Brika | Header, 3-Pin | P3 | JUMP3 | Header 3 | 1 |
| Header 10 | Header, 10-Pin | P4, U4 | HEADER 1x10 djeca | Header 10 | 2 |
| Header 8 | Header, 8-Pin | P5, P6, U5, U6 | HEADER 1X8 djeca | Header 8 | 4 |
| Header 6 | Header, 6-Pin | P7, U7 | HEADER 1x6 djeca | Header 6 | 2 |
| UZ 2 | Header, 4-Pin | P8 | HDR 1x4 Djeca | Header 4 | 1 |
| UZ 1 | Header, 4-Pin | P9 | HDR 1x4 Djeca | Header 4 | 1 |
| DC Motor 1 | Header, 2-Pin | P10 | AK4101-2 | Header 2 | 1 |
| DC Motor 2 | Header, 2-Pin | P11 | AK4101-2 | Header 2 | 1 |
| Res1 | Resistor | R2 | RES ?K | Res1 | 1 |
| RPot | Potentiometer | R4 | TRIMMER CA14 | RPot | 1 |
| SW-PB | Switch | S1 | Print SW | SW-PB | 1 |
| | | | | | |